

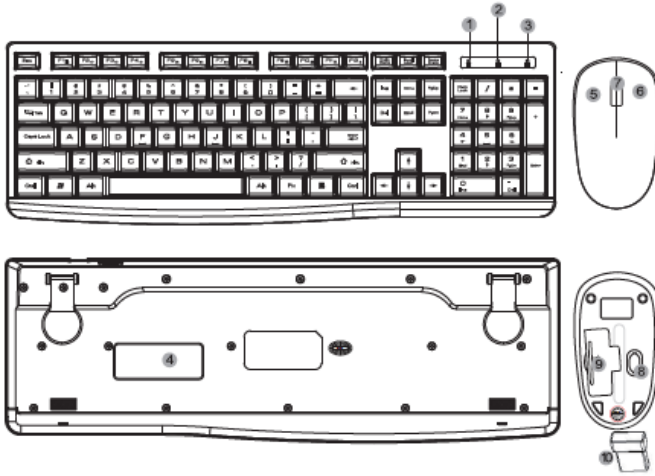


**SH-KBM-01W**

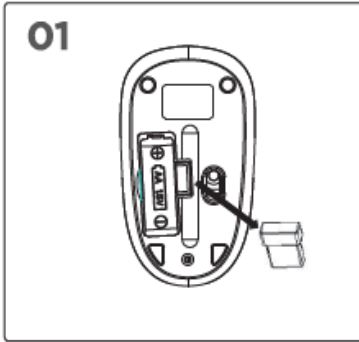


## USER GUIDE

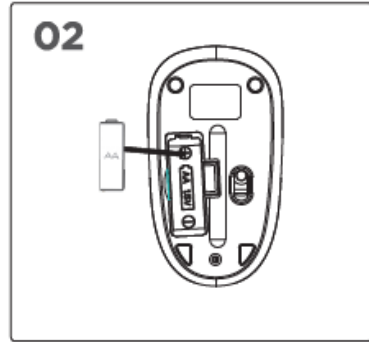
Wireless Keyboard & Mouse Combo



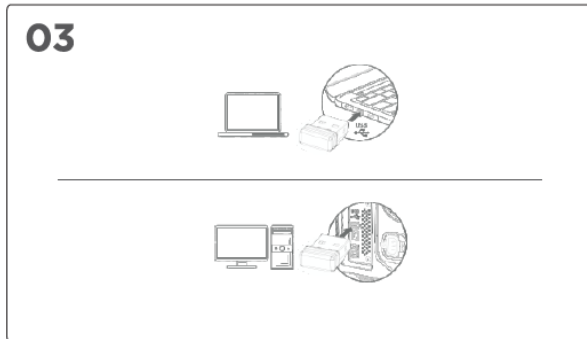
- |                                   |                              |
|-----------------------------------|------------------------------|
| 1. Keyboard number lock indicator | 6. Mouse right key           |
| 2. Keyboard caps lock indicator   | 7. Mouse scrolling wheel     |
| 3. Keyboard low power indicator   | 8. Optical light             |
| 4. Keyboard battery compartment   | 9. Mouse battery compartment |
| 5. Mouse left key                 | 10. USB nano receiver        |



Take the batteries out from the coloured box and peel off the protective plastic film. Then take out the nano receiver from the mouse.



Put the batteries into the mouse and keyboard by following the correct side indicated by (-) and (+) signs. Then close the battery covers.



Insert the nano receiver into a spare USB port of the computer and the keyboard and mouse will connect with the computer automatically.

**Mouse Specifications:**

- Wireless connection: 2.4 GHz
- Size:108\*60.6\*31mm
- Weight : 43.2g±5g
- Wireless Range: Approx. 10 meters
- Sensor: Optical sensor
- Resolution:1200DPI
- Rating voltage/current:1.5V/25mA
- Sleep current: less than 0.45mA (instant entry)
- Tracking Speed:30 inch/sec
- Maximum acceleration :10G

**Keyboard Specifications:**

- Wireless connection: 2.4 GHz
- Size:429.6\*143\*27.5mm
- Weight: 395g±10g
- Wireless Range: Approx. 10 meters
- Key number:104 keys
- Rating voltage/current:1.5V/10mA
- Sleep current:0.03mA
- Key operation power: 55±10gf

## **FN+Multimedia Functions**

- FN+F1 Multimedia player
- FN+F2 Volume -
- FN+F3 Volume +
- FN+F4 Mute
- FN+F5 Previous
- FN+F6 Next
- FN+F7 Play/pause
- FN+F8 Stop
- FN+F9 Browser homepage
- FN+F10 Mailbox
- FN+F11 My computer
- FN+F12 Favourites

### **System Requirement**

Windows 7/8/10 / XP / 2003 / Mac operating system

## Troubleshooting

If the unit appears to have failed in functioning, please check the following;

1. Check that the USB plug is connected to a working USB port on your computer.
2. Check that the batteries are charged, and that the polarity is correct.
3. Check that the power switch is positioned on <ON>.
4. Check that the mouse and keyboard is within the 10m wireless range.

-